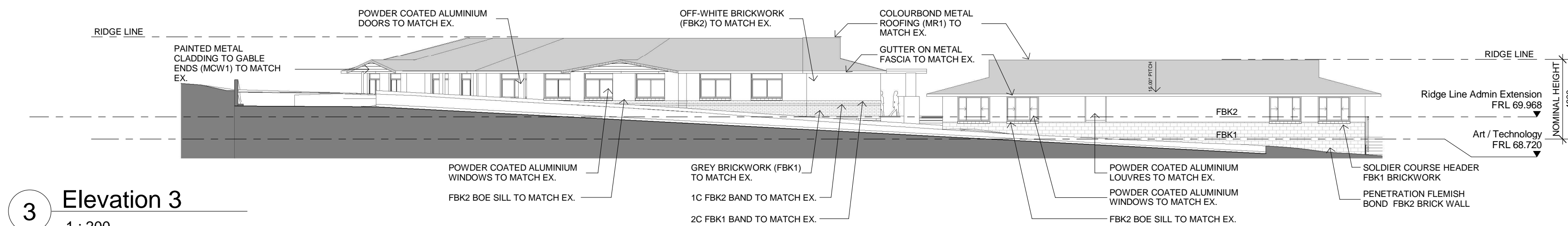


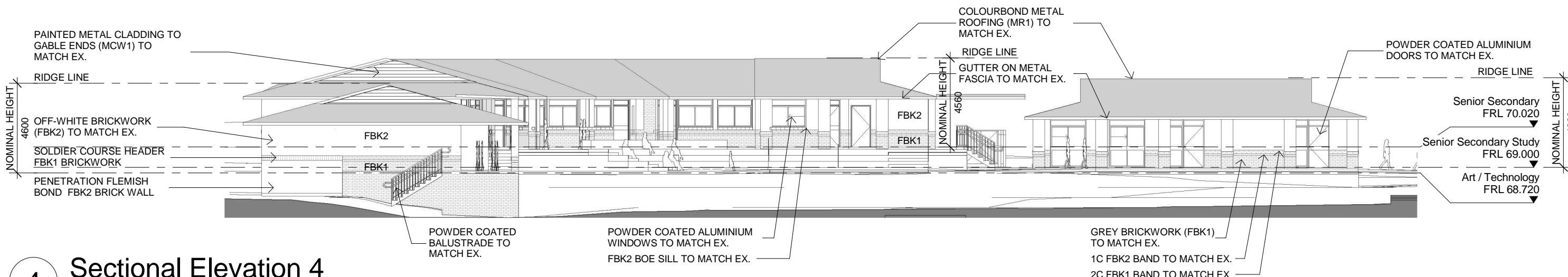
1 Elevation 1
1 : 200



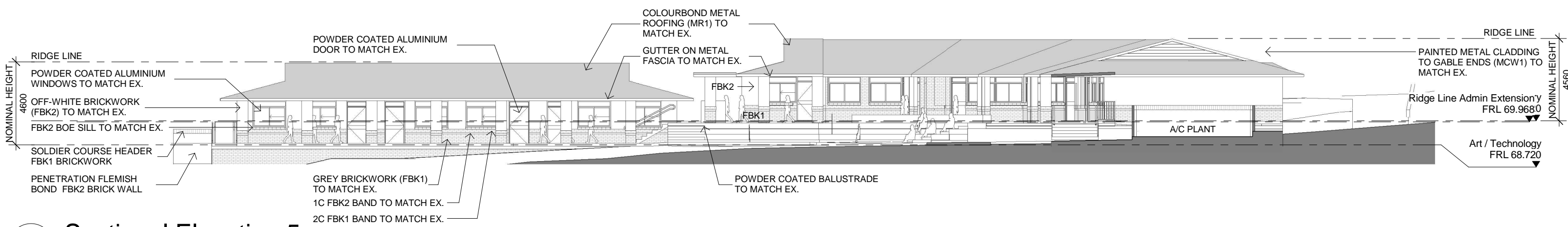
2 Elevation 2
1 : 200



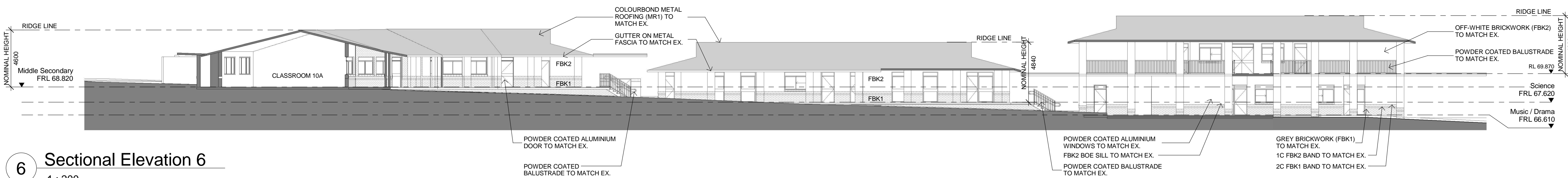
3 Elevation 3
1 : 200



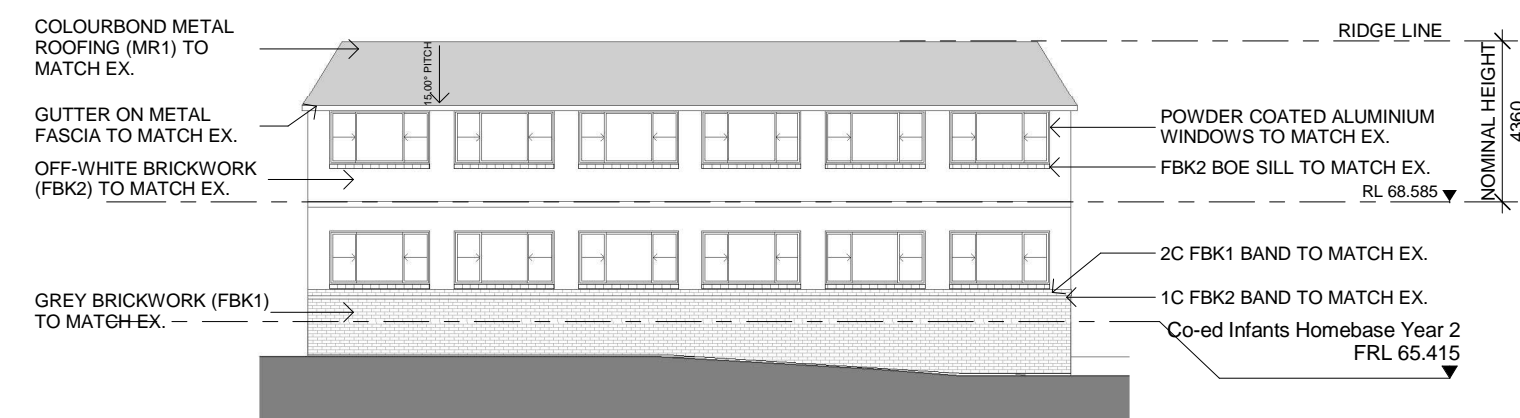
4 Sectional Elevation 4
1 : 200



5 Sectional Elevation 5
1 : 200



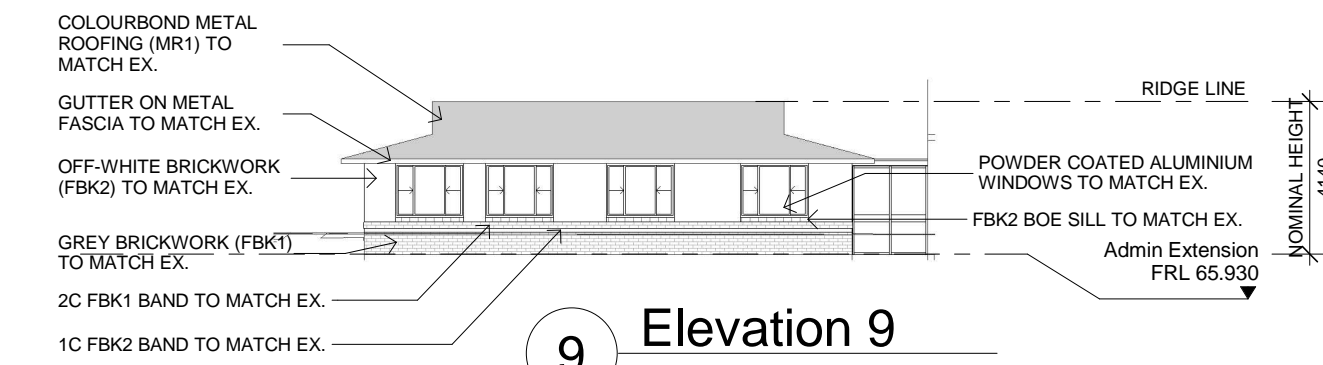
6 Sectional Elevation 6
1 : 200



7 Elevation 7
1 : 200



8 Elevation 8
1 : 200



9 Elevation 9
1 : 200

Issue		
No.	Date	Description
A	23/05/2016	DA Issue 1
B	17/08/2016	DA Issue 2

Legend	
Chkd	GH
GH	GH

NOT FOR CONSTRUCTION

Drawing Title
Elevations and Sections

Project & Client
Montgrove College - Revised DA

at
Orchard Hills
for
The Pared Foundation

Architect
NBRS+PARTNERS
Level 3, 4 Glen Street, Milsons Point, NSW 2061 Australia
T: 61 2 9922 2344 F: 61 2 9922 1308
E: architects@nbrsap.com.au W: www.nbrsap.com.au
Any form of replication of this drawing in full or in part without the written permission of NBRS+PARTNERS Pty Ltd constitutes an infringement of the copyright.
ABN 16 002 247 565 © 2016
Nominated Architects: Geoffrey Deane reg No. 3766; Andrew Duffin reg No. 5602; Garry Hoddinett reg No. 5286

Date 26/08/2016 11:27:24 AM
Scale 1 : 200 @ A1
0 2m 4m 6m 8m 10m 12m
Drawing Reference
14497 - DA300-B